

Mua

Custom Collections Series

Specifications



Overview

All tables include a 65" LG 4K Ultra High Definition (UHD) display protected with toughened safety glass and a 10 touch point IR overlay, with a powerful i7 6 core CPU, it includes the latest GTX 1080ti graphics card on a bespoke custom wood base, in wood and stain of your choice.

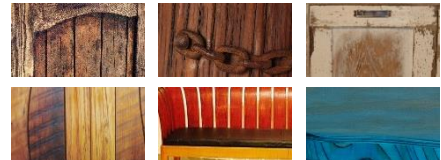
Custom Collections Series includes a high quality custom touch-table, fused with our unique fully-customisable multi-user, multi-touch interactive touch-table software. And online admin portal which gives you access to our unique node relational database designed to consume existing collection database, new content and create your unique interactive exhibits.



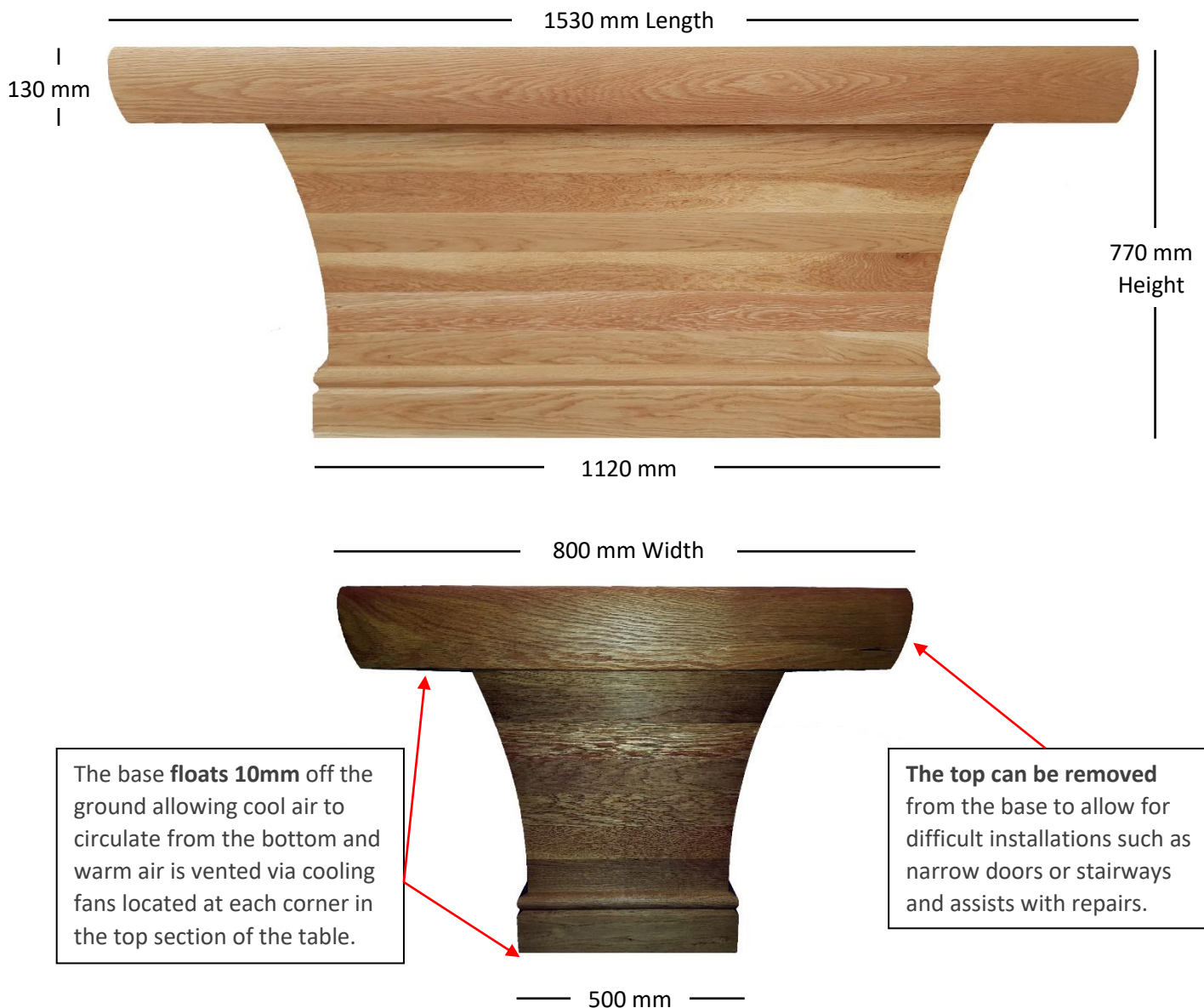
Custom Base

Each new beautifully crafted custom base is made from solid New Zealand wood **designed and built by** critically acclaimed local New Zealand Artist **Chris Wilson**. Chris has over 30 years' experience designing and crafting bespoke furniture and art using wood as his medium. The beauty and quality of Chris's work is renowned.

Each table build can be customised with a **selection of designs, woods and stains** to suit the individual exhibit.



Measurements (side and end view)



Custom Collections Software

Custom Collections series brings providers and users a remarkable facility to host and retrieve historical artefacts and information, current and relevant knowledge and innovative possibilities. This was designed for simple, intuitive and collaborative group engagement and comprises of

- **4 independent docks** located around the table allowing for up to 4 simultaneous users.
- **A photo stream** containing a selection of items slowly flowing and rotating across the centre of the table, this is designed as an attractant.
- The online cloud admin portal gives access to the unique node based relational **Database** (below) designed to consume any existing content or database saving clients time and money.

The screenshot displays the Custom Collections Software interface. At the top, there are tabs for 'Home', 'Application Node Types', and 'Application Nodes'. Below these is a search bar and a table of application nodes. The table has columns for 'id', 'Node Type', 'Attributes', 'Ref Type', 'Ref Attributes', and 'Links'. The table lists various nodes, including 'Link', 'Image', 'Sel', 'List', and 'Video', each with associated attributes and references.

Below the table, there is a detailed view of a specific node. This view includes a search bar, a 'Node Type' dropdown, and a 'Ref Type' dropdown. It also features a 'Ref Attributes' section and a 'Links' section. The 'Links' section shows a list of links, including 'Accession Number', 'Title', 'Date', 'Location', 'Media', 'Printable', 'Source', 'Text', 'Theme', and 'Title'.

(Below) Example of collection software interface on the table with all 4 docks being used independently

The screenshot shows the Custom Collections Software interface on a table. The interface is divided into four independent docks, each displaying different content. The docks are labeled 'Kaitiaki Whakapapa Book', 'Kaitiaki Whakapapa Book', 'Kaitiaki Whakapapa Book', and 'Kaitiaki Whakapapa Book'. The central area of the table features a large, rotating photo stream. The photo stream displays various images, including a portrait of a man, a group of people, and a historical document. The interface also includes a search bar and a 'SELECT TO EXPLORE' button.

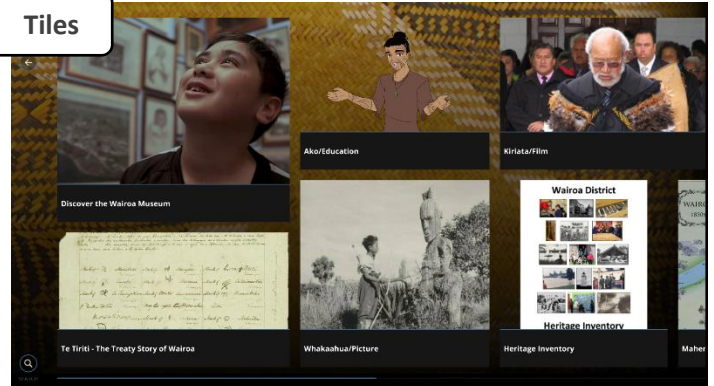
Views and Features

Each of the 4 docks are identical and fully independent. Each type of view can be used to display menus, collections, exhibits, lists, categories or individual items and all can be ordered or sorted to your needs. All images, maps and videos can interact or link to any other list category or item giving maximum flexibility in designing your user experience.

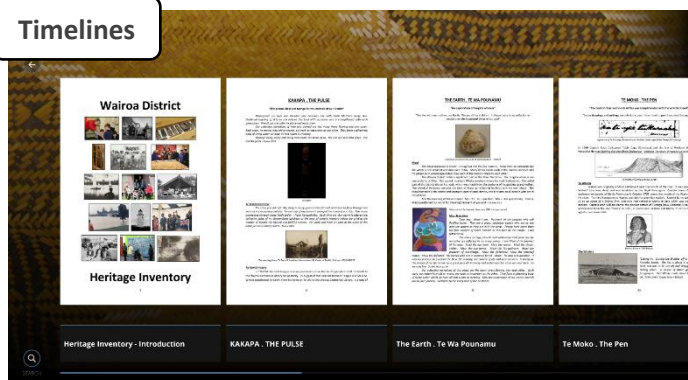
Home/Welcome



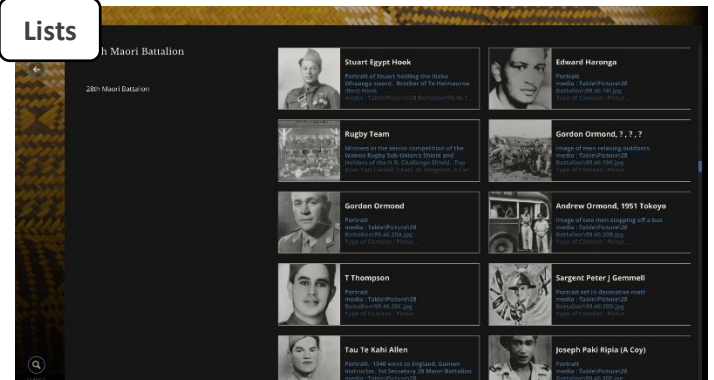
Tiles



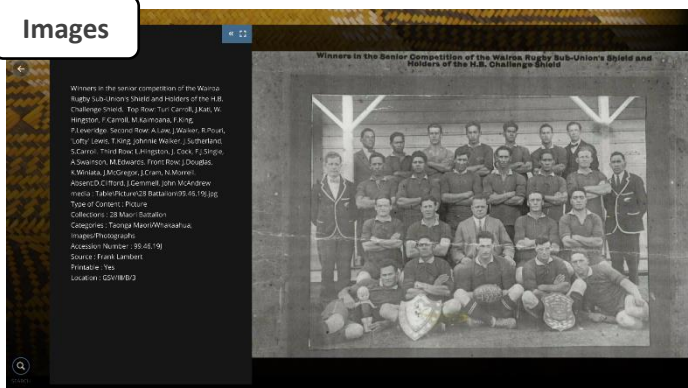
Timelines



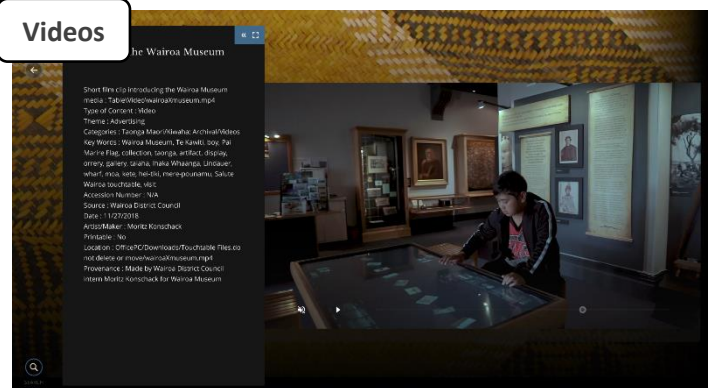
Lists



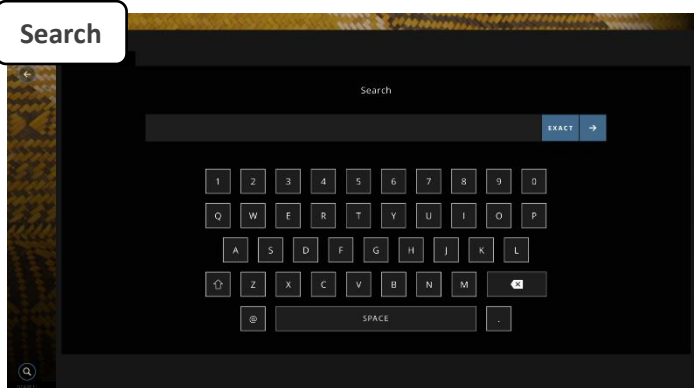
Images



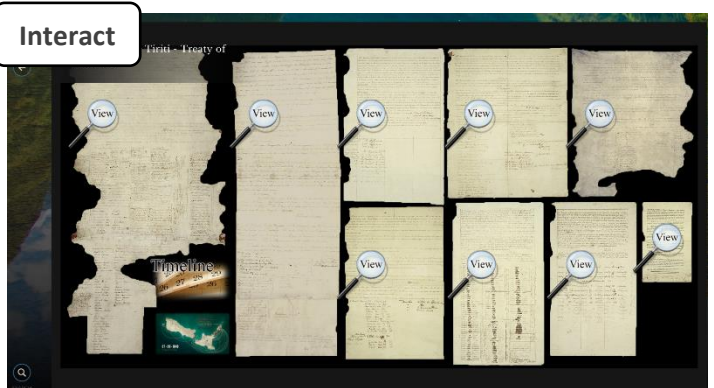
Videos



Search



Interact



Hardware

We have intentionally used the **best in class** products to ensure the highest quality, performance and reliability.



Industry leading Ultra HD Screen with sharp images, vibrant colours, and deep blacks.

10 simultaneous touch points IR overlay. *We found in testing that p-cap technology struggled to detect conductivity of people with dry hands which affected many elderly. As one of the target audiences for the WW1 exhibits is the elderly, we chose IR technology for its more reliable touch detection.*

Strong 6mm toughened safety glass designed to protect and prevent injury.



The world's most advanced GPU architecture. GeForce GTX 1080 Ti features massive rendering horsepower with 3584 NVIDIA® CUDA® cores and 12 billion transistors.



Intel® Core™ X-Series processors are designed for extreme performance, immersive 4K visuals, high speed storage and memory, and the latest technological advancements.



The Samsung 970 EVO 500GB M.2 SSD delivers breakthrough speeds, best-in-class reliability (comes with an additional 2TB internal HD and can be expanded up to 20TB).



Gskill Ripsaw 16Gb dual-channel DDR4 memory designed for maximum compatibility and cutting-edge performance.



4 multi LED cooling fans in base of the top section keep the equipment cool and can be configured to light the base in low light conditions in the colour of your choice.

About Mua

Mua is a cluster of ICT and creative businesses based in Wairoa New Zealand, our vision is
“Connecting community with Technology”

We believe access to information is a critical component of good decision making and our goal is to facilitate the capture, storage and access to historical information for future generations. We feel honouring and learning from the past is the first step on the path to a better future.

We chose Mua as our name because it broadly represents what we are trying to achieve. The Māori translation for Mua is - the past, former, the time before, formerly, first, the front, in front of, before, ahead

i mua - before, in the past.

ā mua - the time to come, the future.

Community outreach – we donate 10% of profits

At Mua we find solutions to problems including those that affect the community we live and operate within. One of our challenges is how do we halt and reverse the systemic social and economic decline affecting our rural community.

We believe the answer is to **invest in rangatahi (youth)**, we have made a commitment to invest 10% of our profits towards community activities that **inspire, support and build capacity** in our rangatahi, such as our local ICT Club.

WARRANTY & SUPPORT

Our products are custom built with only the highest-quality components available and are designed to last. We back all of our hardware with a three year warranty. The same people who design and build our systems, provide our timely support.

IMPORTANT NOTICE TO PURCHASER: Specifications are subject to change without notice. Mua hardware and software are warrantied from the ship date to the period stated in the warranty. Please note that under Mua's warranty, Mua has no obligation for any hardware product that is modified or damaged through misuse, accident, neglect, or subsequent integration, service, or tampering, by anyone other than Mua or an Mua-approved entity or individual. Mua makes no additional warranties, express or implied, including but not limited to any fitness for a particular purpose. The User is responsible for determining whether Mua hardware products or software are fit for the User's particular purpose.

If the hardware product or software are proven not to have met Mua's warranty, then Mua's sole obligation and User's and Purchaser's exclusive remedy, will be, at Mua's option, to repair or replace the product or refund its purchase price. Mua shall not be liable in any action against it in any way related to the hardware products or software for any loss or damages, whether non-specified, direct, indirect, special, incidental or consequential (including downtime, loss of profits or goodwill) regardless of the legal theory asserted. Please see our full warranty for complete details.